

Virtual Computing Lab na ZSEM-u

IZRADA VJEŽBI ZA CORPORATE SUITE I MS DYNAMICS PLATFORME

Tečajevi

Tečajevi na MBA studijima

- Računovodstveni informacijski sustavi
 - Edukacija polaznika o izradi i upravljanju računovodstvenih procesa
- ERP sustavi
 - Korištenje ERP sustava MS Dynamics

Grupe

- Računovodstveni informacijski sustavi
- 20-30 studenata
- 2. godina održavanja vježbi

Računalna oprema

Računala – nedovoljno memorije

Potreba za serverom

VCL

Istraživanje mogućnosti

Lokalni server

Klijentski VCL image

Server

Windows Server 2003 R2 SP2 (64 Bit) or Windows Server 2008 R2

minimum requirements: **Windows XP SP3, 32 Bit**

Microsoft SQL Server 2008 R2 Express Edition is automatically installed with CP-Suite Server

Dual Core CPU or similar processor

4 GB RAM, depending on the databases in use

Klijent

CP-Suite Client

- *3 GB RAM*
- *1 GB needed RAM for installation*

Instalacija

Ako se editira image u kojem je aplikacija koja je kreirala neki svoj servis pod windows servisima koji se ne pokreće preko NTAUTHORITY/LOCALSERVICES već preko lokalnog admin accounta

prilikom editiranja imagea taj servis treba pokretati sa trenutnim passwordom od Administrator accounta koji je dan prilikom rezervacije editiranja imagea

Instalacija

The screenshot shows a Remote Desktop Connection window titled "31.147.201.133 - Remote Desktop Connection". The main window is the Windows Services console, displaying a list of services for the local computer. The "CP-Server" service is selected, and its properties dialog box is open. The "Log On" tab is active, and the "Log on as:" section is set to "This account:" with the username ".\Administrator" and a password field. The "Log On" tab is circled in red, and the "Log on as:" section is also circled in red. The "CP-Server Properties (Local Computer)" dialog box has tabs for "General", "Log On", "Recovery", and "Dependencies". The "Log on as:" section has three options: "Local System account", "This account:", and "Network account:". The "This account:" option is selected, and the username ".\Administrator" is entered in the text box. The password field is filled with dots. The "Confirm password:" field is also filled with dots. The "Allow service to interact with desktop" checkbox is unchecked. Below the "Log on as:" section, there is a table for hardware profiles:

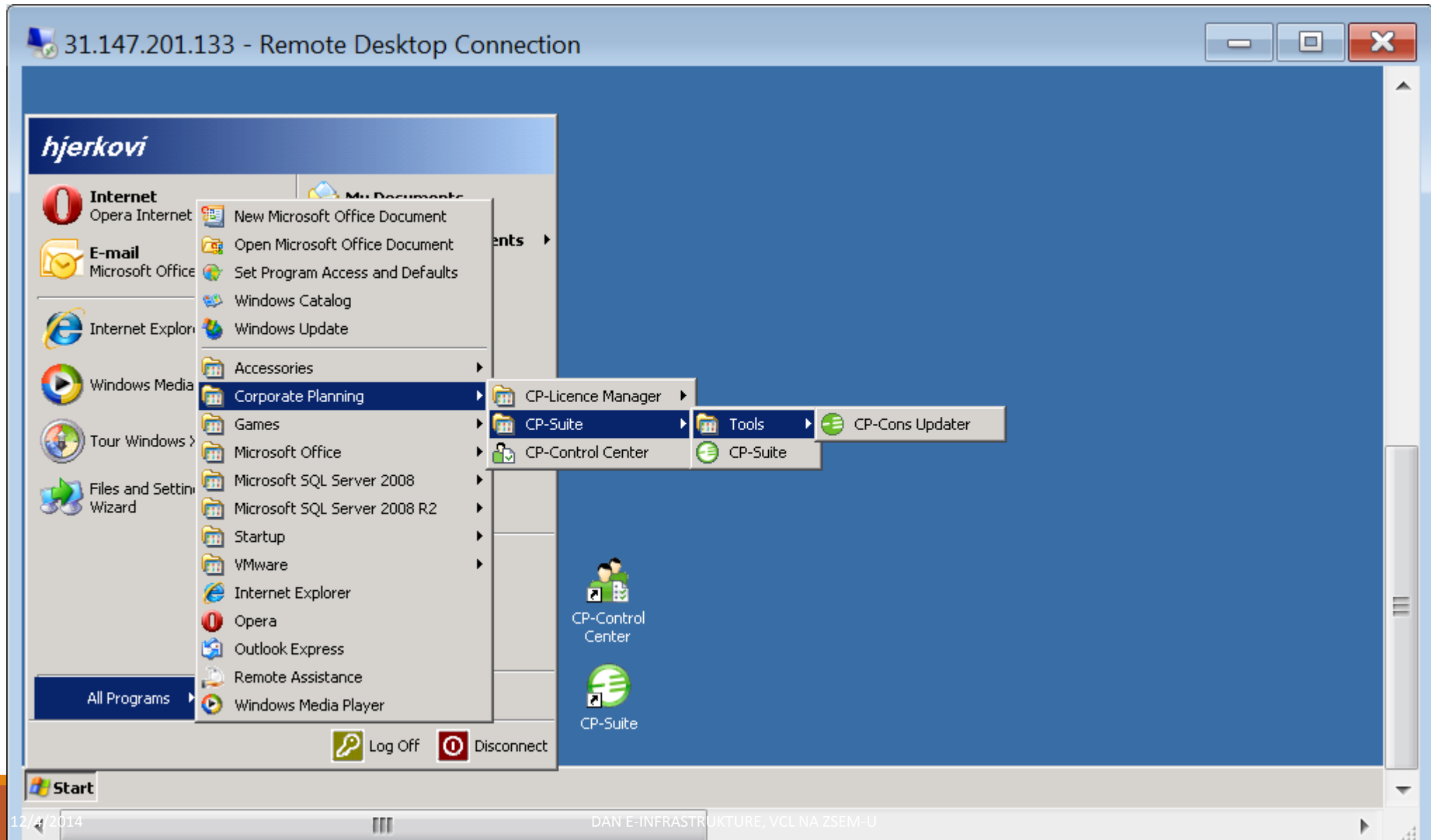
Hardware Profile	Service
Profile 1	Enabled

The Services console window shows a list of services with columns for Name, Description, Status, and Startup type. The "CP-Server" service is highlighted in the list. The description for "CP-Server" is "Application server for CP Corporate Planning AG products".

Novi accounti

Pokušaj rješavanja problema sa kreiranjem novog admin accounta ne radi jer kreirani accounti u imageu ne preživljavaju nakon spremanja izmjena imagea

Instalacija



Usporedba

Trošak veći nego kod zasebnog servera veći
iako ne značajnije jer se radi o jednom korisniku servera

Glavni nedostatak –otežano praćenje studentskih aktivnosti

Rješenje - Kreirati poseban zadatak, prijenos rješenja na
LMS

MS Dynamics

msdynamics.zsem.hr – Win server 2008 sa VPN serverom

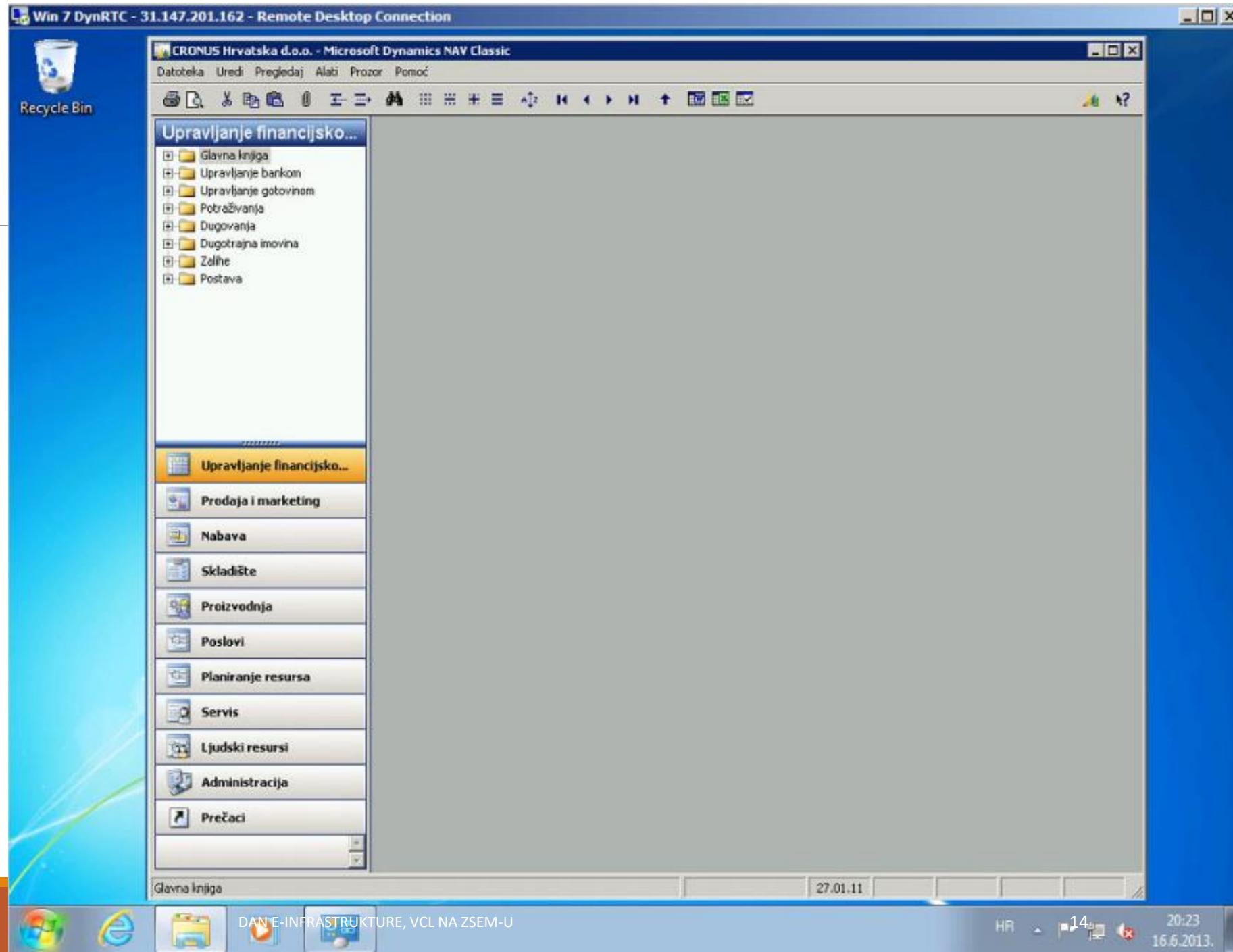
VCL Win7 image (klijenti)

VPN veza na server

DNS – radi ok, ime klijenta prepoznato

VM na VCL-u ne može se dodati u domenu jer ne može iskomunicirati s DC-om

VLC – Win Server (VPN)



MS Dynamics

Server i klijent skupa – od ove godine isto kao i Corporate Suite

MS Dynamics

Vježbe 2015

Win 7 image 50 GB

Svi podaci ubačeni u image, server + klijent

Prijedlozi

Velik broj softwarea koji zahtijeva serversku instalaciju i često domenu





VCL / VCL-277

Add support for images to join Active Directory domains

Agile Board

Details

Type:	 New Feature	Status:	OPEN
Priority:	 Major	Resolution:	Unresolved
Affects Version/s:	2.0	Fix Version/s:	None
Component/s:	database , vclid (backend) , ... (1)		
Labels:	None		

Description

There have been multiple requests for Active Directory integration for VCL images. VCL image should be able to join an AD domain when they are loaded. A web utility will need to be created to administer this.

Activity

All **Comments** Work Log History Activity

▼  [Josh Thompson](#) added a comment - 21/Dec/10 20:19

changed issue type from Bug to 'New Feature'